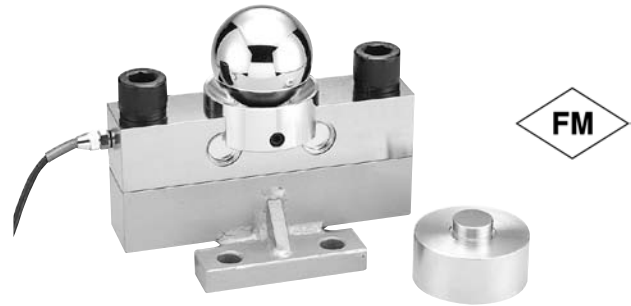


## Miniature Double-Ended Beam

### FEATURES

- Capacities: 10–50T
- High side load tolerance
- Electroless nickel-plated alloy tool steel
- Surge protection optional for 10T to 50T
- **Optional**
  - Hermetically sealed available
  - FM approval available



### APPLICATIONS

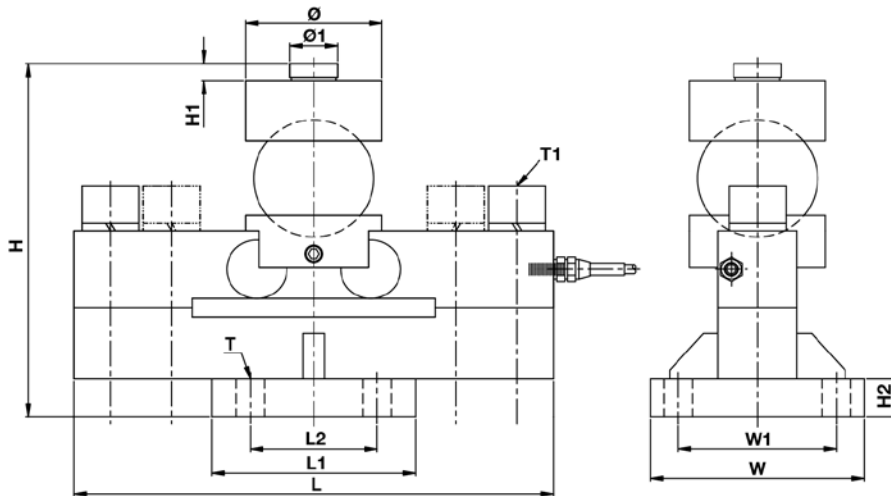
- Truck/rail scales
- Silo/hopper/tank weighing

### DESCRIPTION

MDB is designed for truck and rail scales in high capacities with low profile. The design of loading through a ball is insensitive to side load.

MDB is constructed of alloy steel and is fully potted and sealed with special chemical compounds to IP67 providing excellent protection against water and moisture attack. MDB Hermetically-Sealed is constructed to IP68 providing excellent protection against corrosive and wash-down environments.

### OUTLINE DIMENSIONS



CAPACITY		L	L <sub>1</sub>	L <sub>2</sub>	H	H <sub>1</sub>	H <sub>2</sub>	Ø	Ø <sub>1</sub>	W	W <sub>1</sub>	T	T <sub>1</sub>
10 / 20 / 25 / 30T	mm	240	125	80	230	11	20	88	30	135	100	4-Ø18	2-M24
	(inch)	9.45	4.92	3.15	8.85	0.43	0.79	3.46	1.18	5.31	3.94		
40–50T	mm	340	160	124	261	11	20	98	40	160	124	4-Ø21	4-M24
	(inch)	13.38	6.30	4.88	10.28	0.43	0.79	3.86	1.57	6.30	4.88		

## Miniature Double-Ended Beam

<b>SPECIFICATIONS</b>		
<b>PARAMETER</b>	<b>VALUE</b>	<b>UNIT</b>
<b>NTEP/OIML accuracy class</b>	Non-Approved	
<b>Maximum no. of intervals (n)</b>	3000	
<b>Y = E<sub>max</sub>/V<sub>min</sub></b>	5000	Maximum available
<b>Standard capacities (E<sub>max</sub>)</b>	10000, 20000, 25000, 30000, 40000, 50000	kg
<b>Rated output—R.O.</b>	2.0	mV/V
<b>Rated output tolerance</b>	0.2	±% of rated output
<b>Zero balance</b>	1	±% of rated output
<b>Non-linearity</b>	0.030	±% of rated output
<b>Hysteresis</b>	0.030	±% of rated output
<b>Non-repeatability</b>	0.020	±% of rated output
<b>Creep error (20 minutes)</b>	0.030	±% of rated output
<b>Zero return (20 minutes)</b>	0.030	±% of rated output
<b>Temperature effect on min. dead load output</b>	0.0026	±% of rated output/°C
<b>Temperature effect on sensitivity</b>	0.0015	±% of applied load/°C
<b>Compensated temperature range</b>	-10 to +40	°C
<b>Operating temperature range</b>	-20 to +60	°C
<b>Safe overload</b>	150	% of R.C.
<b>Ultimate overload</b>	300	% of R.C.
<b>Excitation, recommended</b>	10	VDC or VAC RMS
<b>Excitation, maximum</b>	15	VDC or VAC RMS
<b>Input impedance</b>	770±10	Ω
<b>Output impedance</b>	700±5	Ω
<b>Insulation resistance</b>	>5000	MΩ
<b>Cable length</b>	13.5	m
<b>Construction</b>	Nickel-plated alloy steel	
<b>Environmental protection</b>	IP67	

All specifications subject to change without notice.

## FM Approval

Intrinsically Safe: Class I, II, III; Div. 1 Groups A-G  
 Non-Incendive: Class I; Div. 2 Groups A-D

## Disclaimer

ALL PRODUCTS, PRODUCT SPECIFICATIONS AND DATA ARE SUBJECT TO CHANGE WITHOUT NOTICE.

Vishay Precision Group, Inc., its affiliates, agents, and employees, and all persons acting on its or their behalf (collectively, "Vishay Precision Group"), disclaim any and all liability for any errors, inaccuracies or incompleteness contained herein or in any other disclosure relating to any product.

The product specifications do not expand or otherwise modify Vishay Precision Group's terms and conditions of purchase, including but not limited to, the warranty expressed therein.

Vishay Precision Group makes no warranty, representation or guarantee other than as set forth in the terms and conditions of purchase. **To the maximum extent permitted by applicable law, Vishay Precision Group disclaims (i) any and all liability arising out of the application or use of any product, (ii) any and all liability, including without limitation special, consequential or incidental damages, and (iii) any and all implied warranties, including warranties of fitness for particular purpose, non-infringement and merchantability.**

Information provided in datasheets and/or specifications may vary from actual results in different applications and performance may vary over time. Statements regarding the suitability of products for certain types of applications are based on Vishay Precision Group's knowledge of typical requirements that are often placed on Vishay Precision Group products. It is the customer's responsibility to validate that a particular product with the properties described in the product specification is suitable for use in a particular application.

No license, express, implied, or otherwise, to any intellectual property rights is granted by this document, or by any conduct of Vishay Precision Group.

The products shown herein are not designed for use in life-saving or life-sustaining applications unless otherwise expressly indicated. Customers using or selling Vishay Precision Group products not expressly indicated for use in such applications do so entirely at their own risk and agree to fully indemnify Vishay Precision Group for any damages arising or resulting from such use or sale. Please contact authorized Vishay Precision Group personnel to obtain written terms and conditions regarding products designed for such applications.

Product names and markings noted herein may be trademarks of their respective owners.